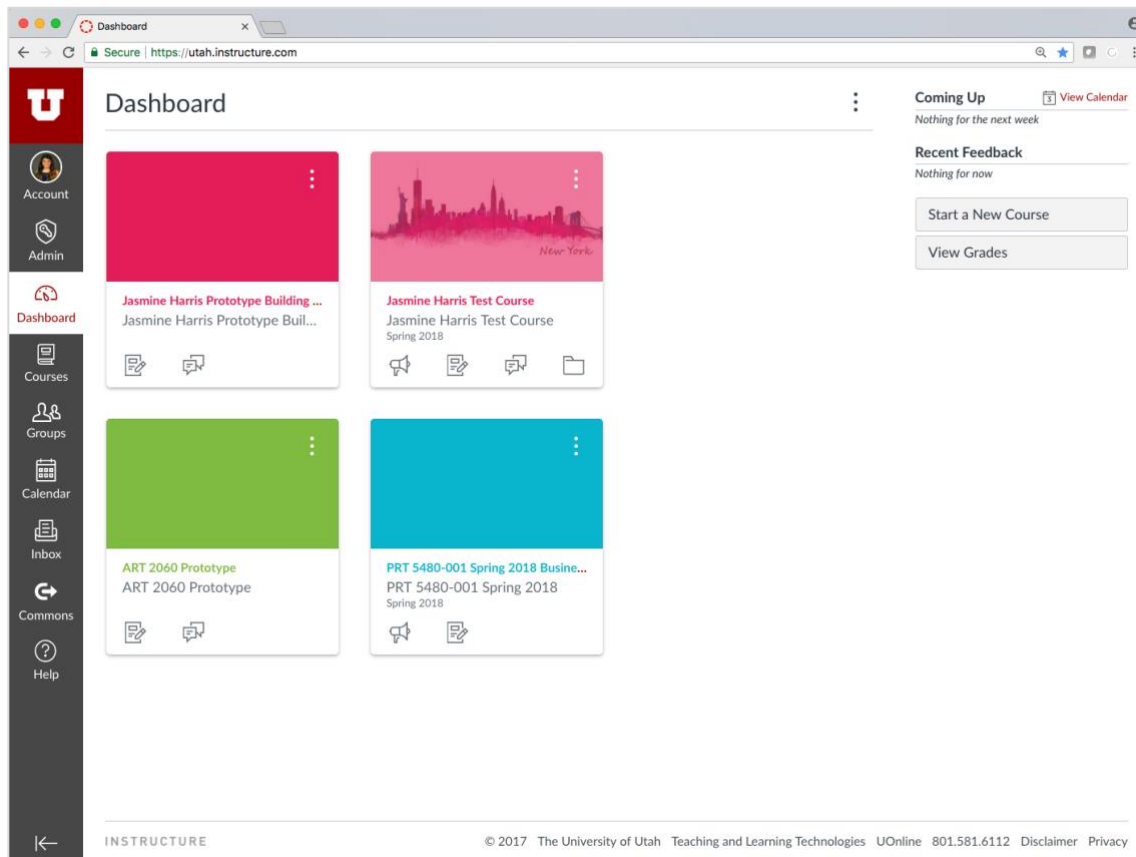
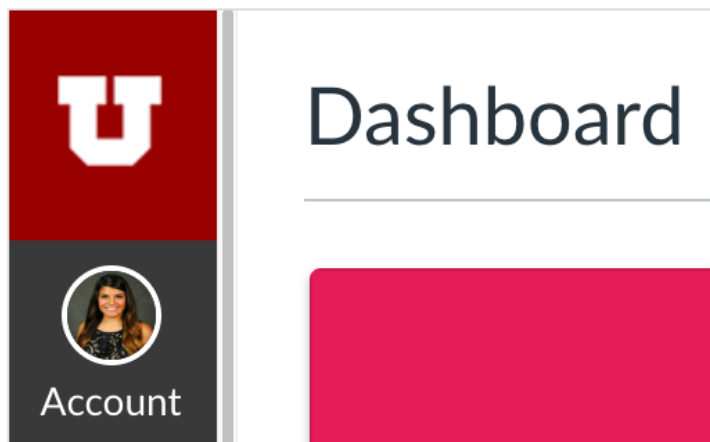


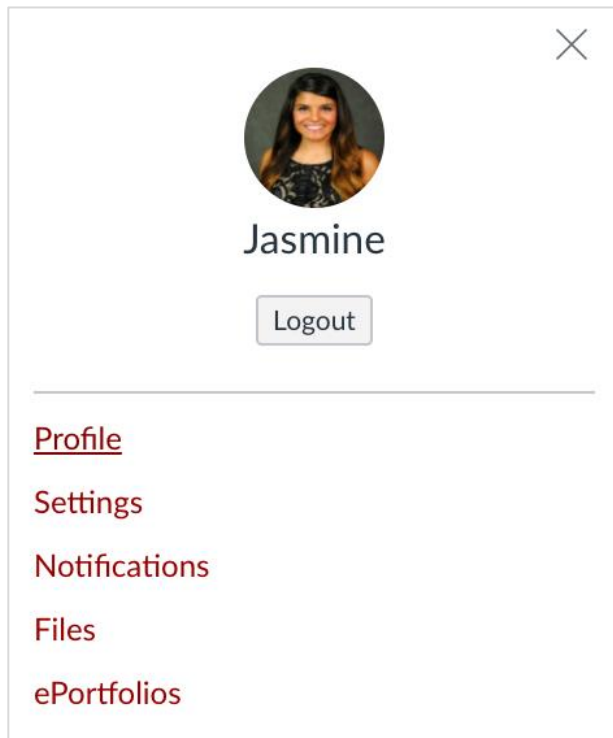
Step 1: Go to utah.instructure.com



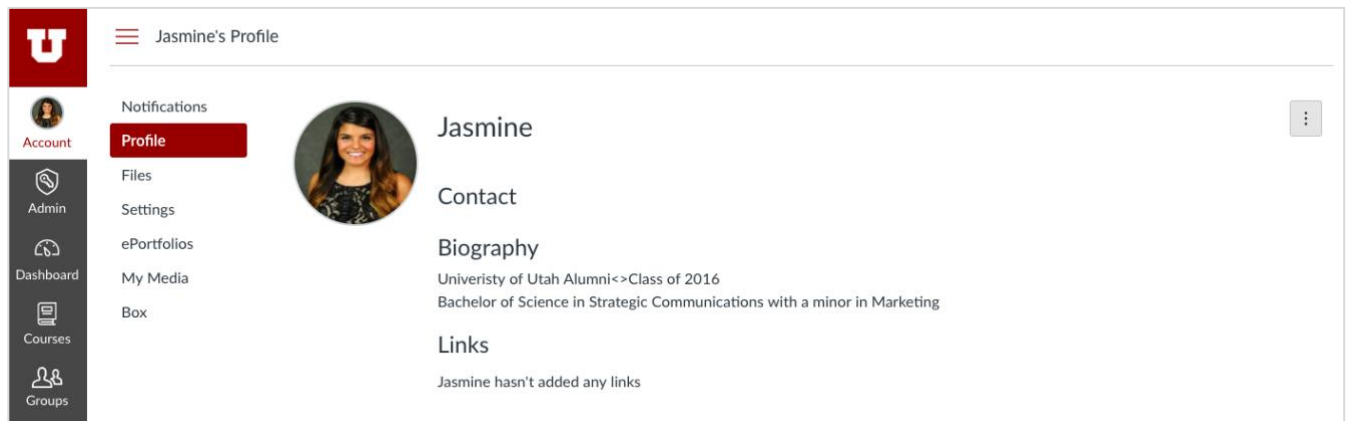
Step 2: Select Account in top-left corner



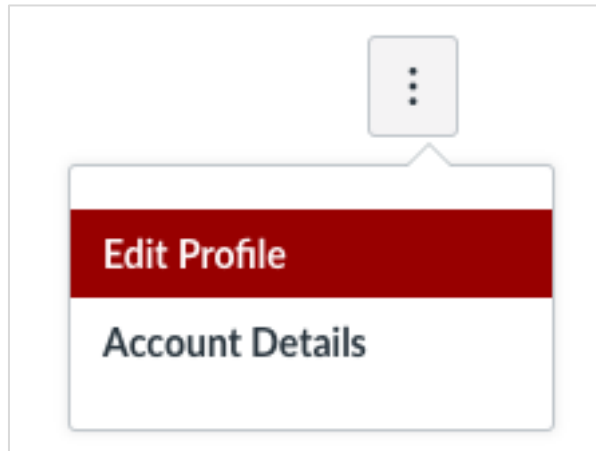
Step 3: Select Profile option



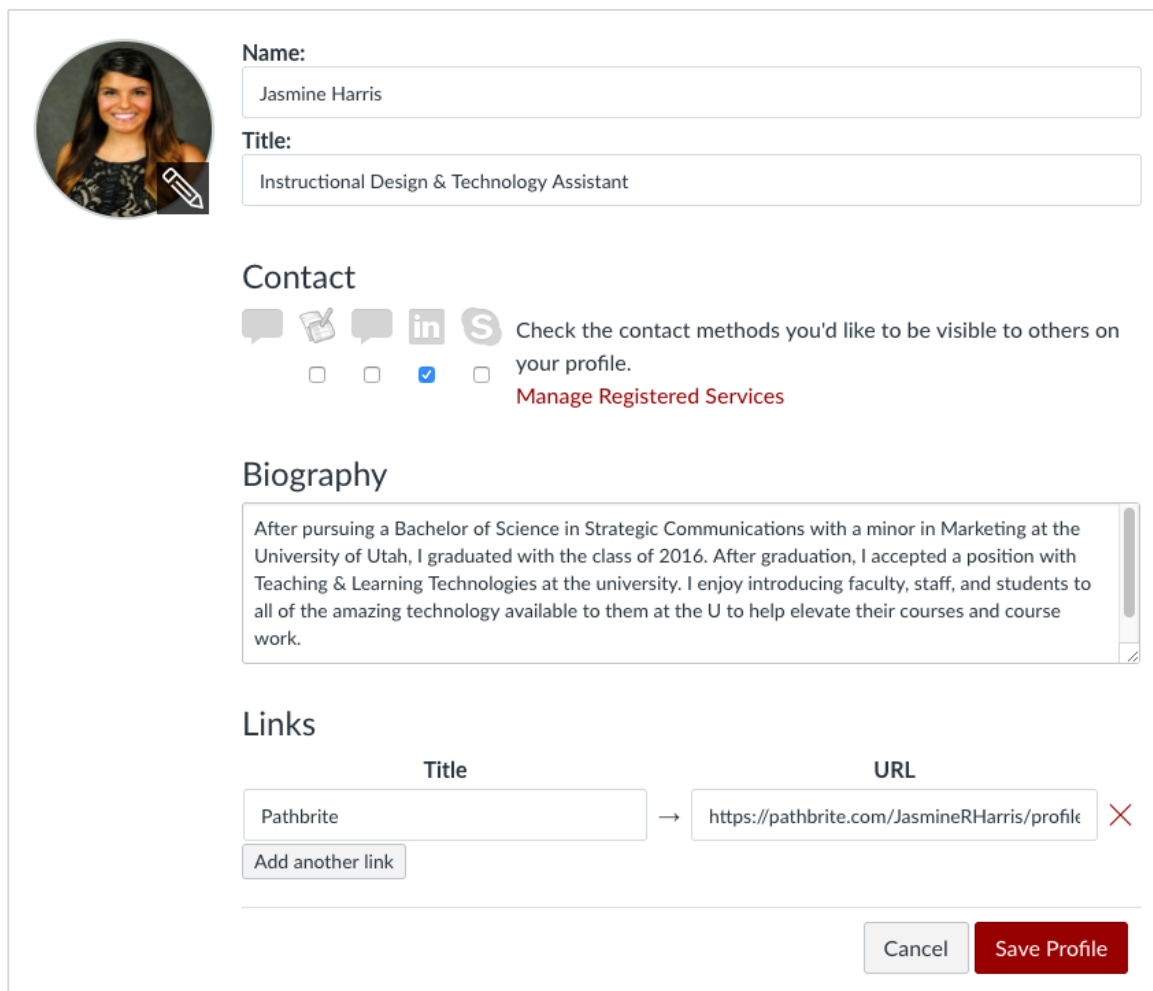
Step 4: Select 3-dots button in top-right corner



Step 5: Select Edit Profile



Step 6: Select profile picture and fill out profile information

A screenshot of a profile editing form. On the left is a circular profile picture of a woman with a pencil icon overlaid. To the right of the picture are two text input fields: 'Name:' with 'Jasmine Harris' and 'Title:' with 'Instructional Design & Technology Assistant'. Below these is a 'Contact' section with icons for messaging, document, social media, and services, each with a checkbox. The 'social media' checkbox is checked. Below the contact section is a 'Biography' section with a text area containing a paragraph about the user's education and work. At the bottom is a 'Links' section with a table-like structure for adding links. One link is added with the title 'Pathbrite' and the URL 'https://pathbrite.com/JasmineRHarris/profile'. There are 'Cancel' and 'Save Profile' buttons at the bottom right.

Name:
Jasmine Harris

Title:
Instructional Design & Technology Assistant

Contact

Check the contact methods you'd like to be visible to others on your profile.
[Manage Registered Services](#)

Biography

After pursuing a Bachelor of Science in Strategic Communications with a minor in Marketing at the University of Utah, I graduated with the class of 2016. After graduation, I accepted a position with Teaching & Learning Technologies at the university. I enjoy introducing faculty, staff, and students to all of the amazing technology available to them at the U to help elevate their courses and course work.

Links

Title	URL
Pathbrite	https://pathbrite.com/JasmineRHarris/profile

[Add another link](#)

Step 7: Click Save Profile



Teaching & Learning Technologies (TLT)

Contact: classhelp@utah.edu | 801-581-6112 | tlt.utah.edu

Canvas Help Drop-In Hours: M-F 9:00AM-4:00PM